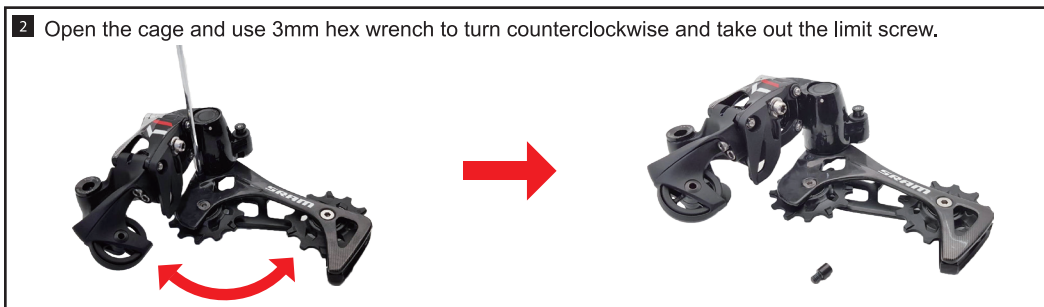


Thank you for your purchasing. Please follow the installation instruction to upgrade.

(Warranty void if you do not upgrade by the instruction.)

The installation instruction is suitable for MD4 C48 rear derailleur cage only. Actual installation as below:



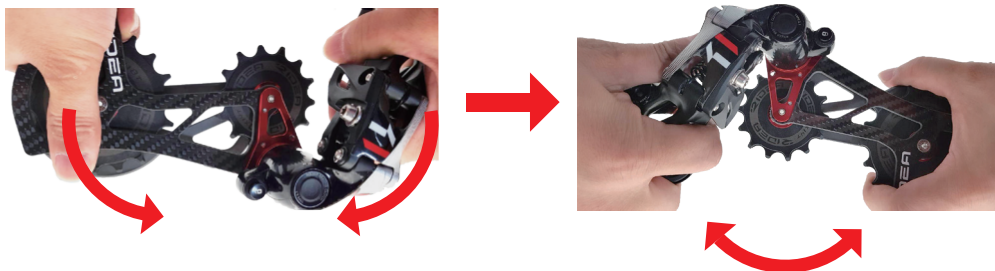
- 6 Lock the spring hook on the latch position of cage's adapter.



- 7 Use 3mm hex wrench to fix the body screw tightly.

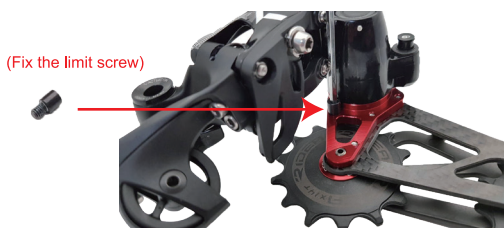


- 8 Turn the derailleur's body clockwise and the cage counterclockwise to fixed position. Note turning direction to avoid damage.



- 9 Fix the limit screw.

(Note: Please do not over tighten, or the limit screw may get stripped.)



- 10 Upgrade is complete.



Dodavatel / Importer / Поставщик
KCK Cyklosporť-Mode s.r.o., Bartořova 348, 765 02 Otrokovice-Kvitkovice, CZ
www.kckcyklosporť.cz, www.force.cz
Země původu Taiwan / Made in Taiwan / Страна происхождения Тайвань